

EM-6241 | Antenna, Directional SISO, Vertically Polarized



Description

The EM-6241 is a compact, directional 1x1 SISO antenna covering 1.6–2.7 GHz, designed for reliable, high-performance wireless connectivity. Supporting MANET radios, Wi-Fi, and cellular frequency bands, it delivers improved throughput, extended range, and enhanced link quality across tactical and commercial applications.



Specifications

Electrical

Frequency Range: 1.6GHz – 2.7GHz

Polarization: Vertical

VSWR: 2:1 Max, <1.5:1 Average

3dB Beamwidth: Azimuth 70° Typical

Elevation 60° Typical

Impedance: 50Ω, Nominal

Gain: 8dBi Typical

Max Power: 15W CW

Connector: TNC Female (**EM-6241** | 1.6-2.7GHz)

Type 'N' Female (**EM-6241-1** | 1.6-2.7GHz)

SMA Female (**EM-6241-2** | 1.6-2.7GHz)

Mechanical

Dimensions:

Height: 6.25 in. (15.9 cm)

Width: 8.0 in. (20.3 cm)

Depth: 2.5 in. (6.4 cm)

Weight: 1.2 lbs. (0.55 kg)

Mounting Options Available:

-8/32 Flange for Wall Mount

Color Options:

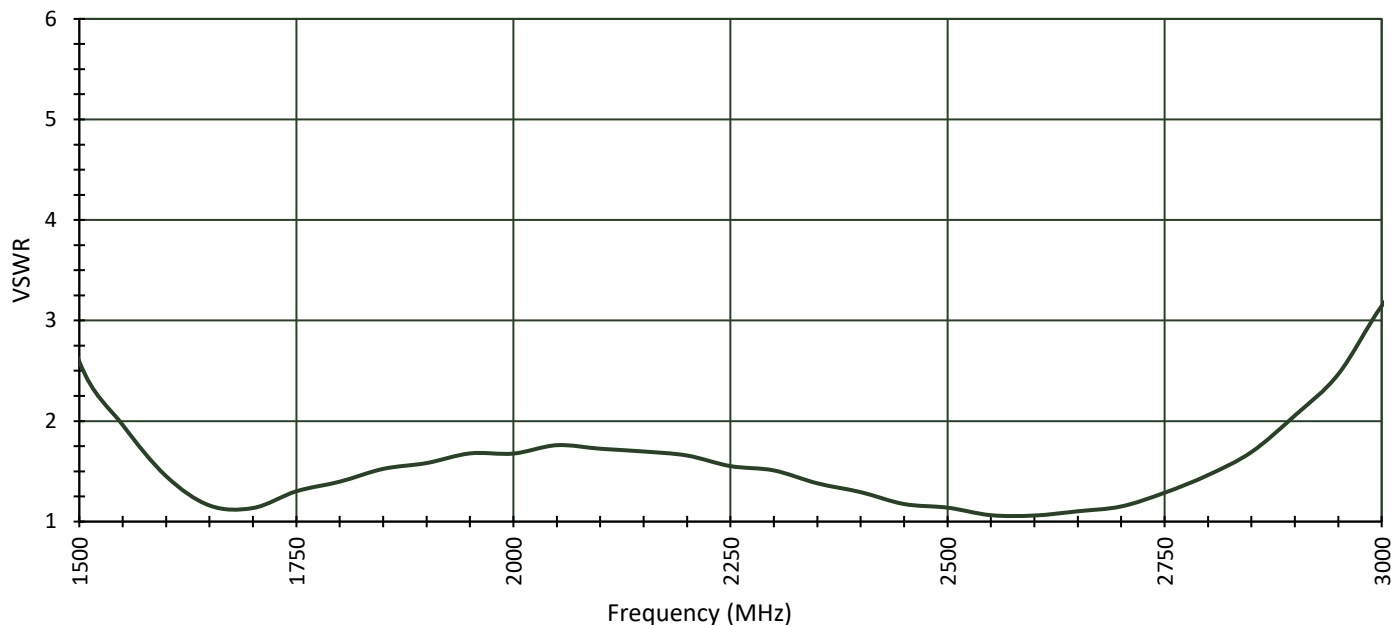
- Light Gray (default)
- Custom colors available upon request

Specifications subject to change without notice, unless otherwise specified. Product is manufactured in Johnstown, NY, U.S.A.

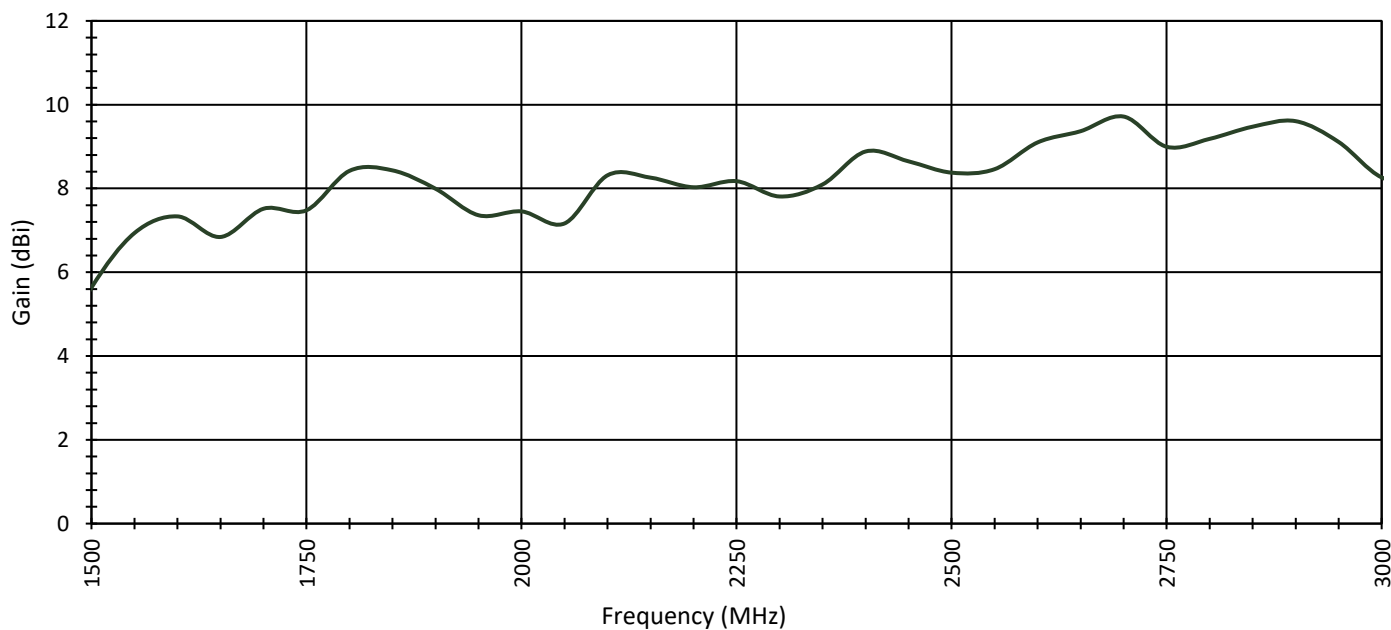


EM-6241 | Antenna, Directional SISO, Vertically Polarized

EM-6241 Typical VSWR



EM-6241 Max* Gain (dBi)



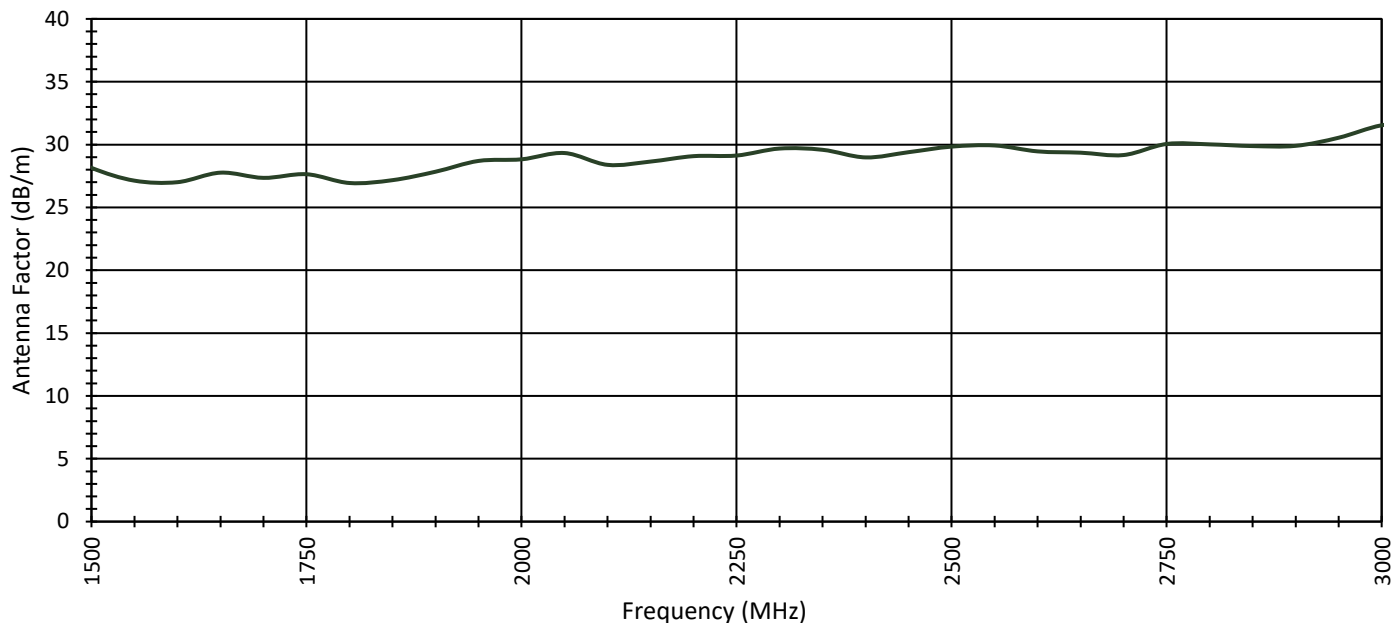
*Maximum Gain determined from scans at all radiation angles and elevations. Data shown is typical, not guaranteed.

Specifications subject to change without notice, unless otherwise specified. Product is manufactured in Johnstown, NY, U.S.A.

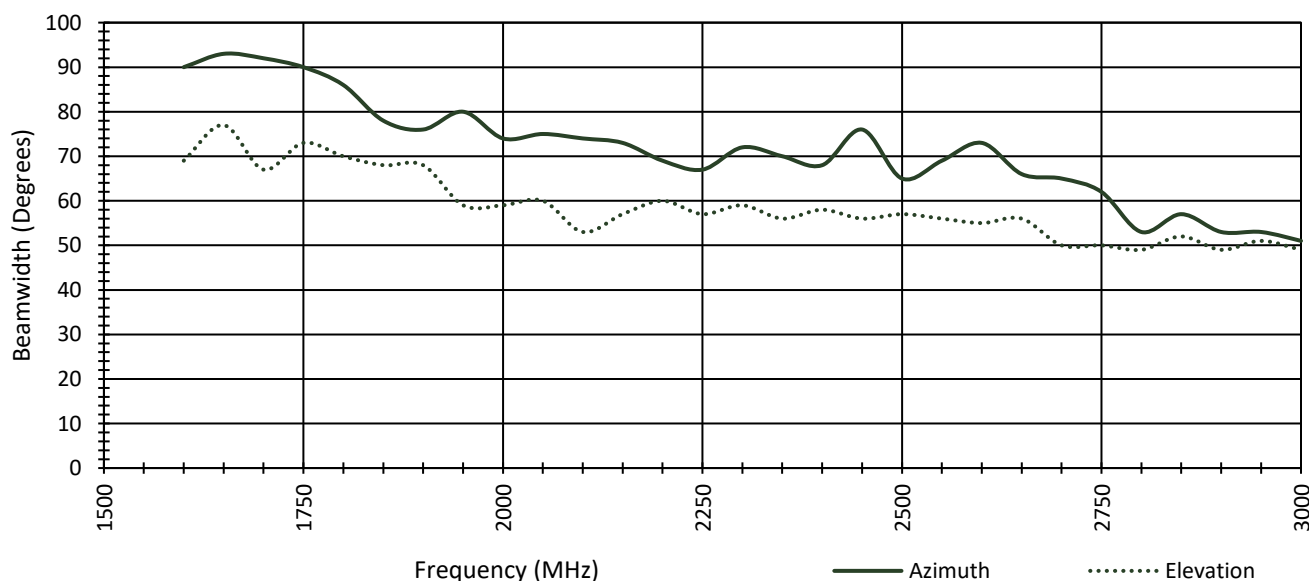


EM-6241 | Antenna, Directional SISO, Vertically Polarized

EM-6241 Typical Antenna Factor (dB/m)



EM-6241 Typical 3dB Beamwidth



Specifications subject to change without notice, unless otherwise specified. Product is manufactured in Johnstown, NY, U.S.A.

Data shown is typical, not guaranteed.

